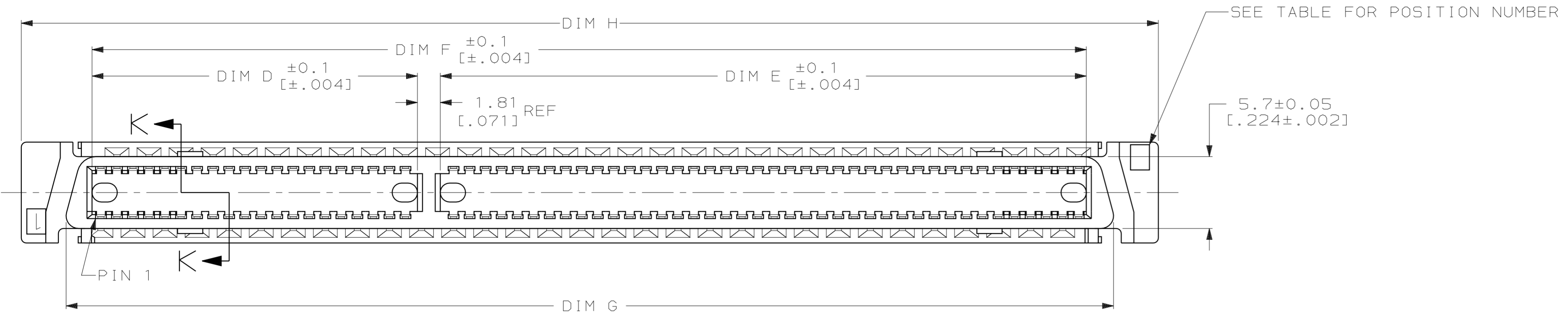
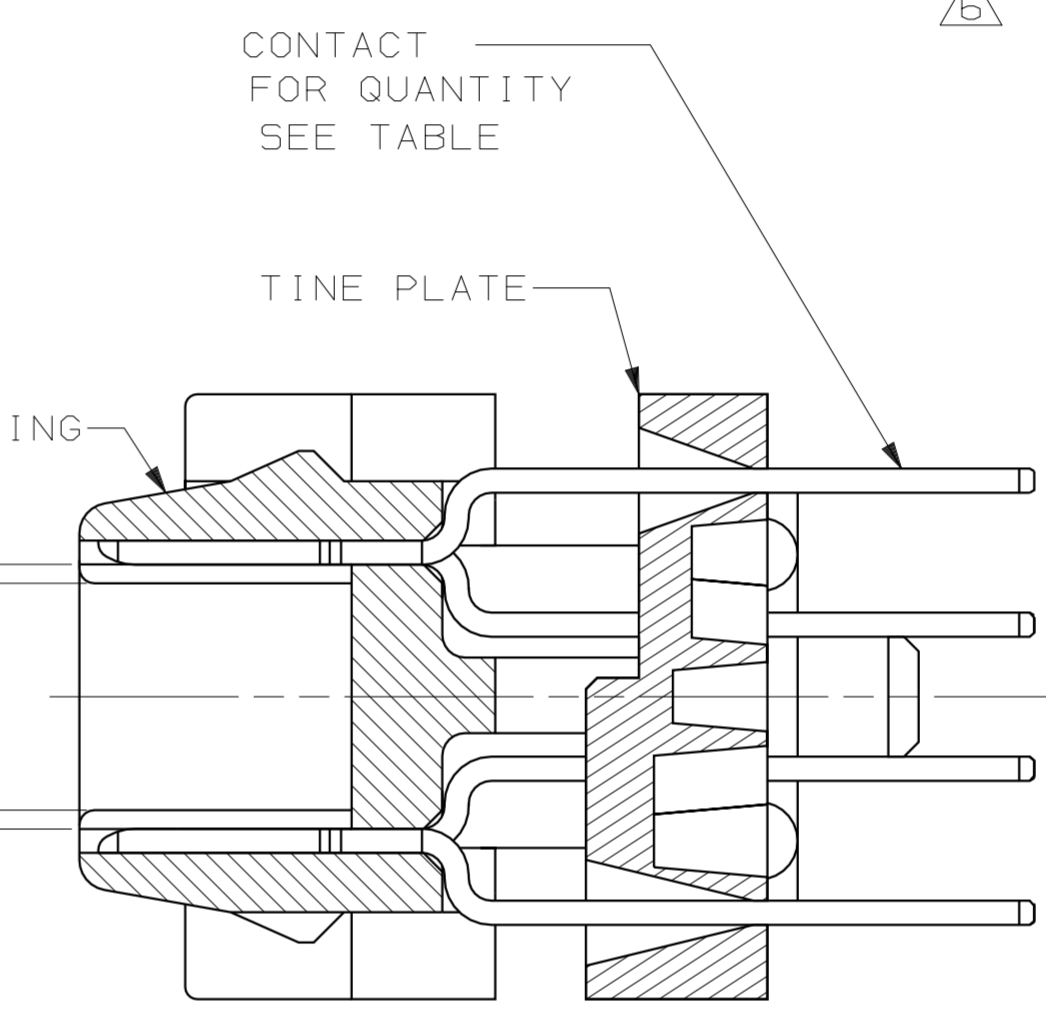
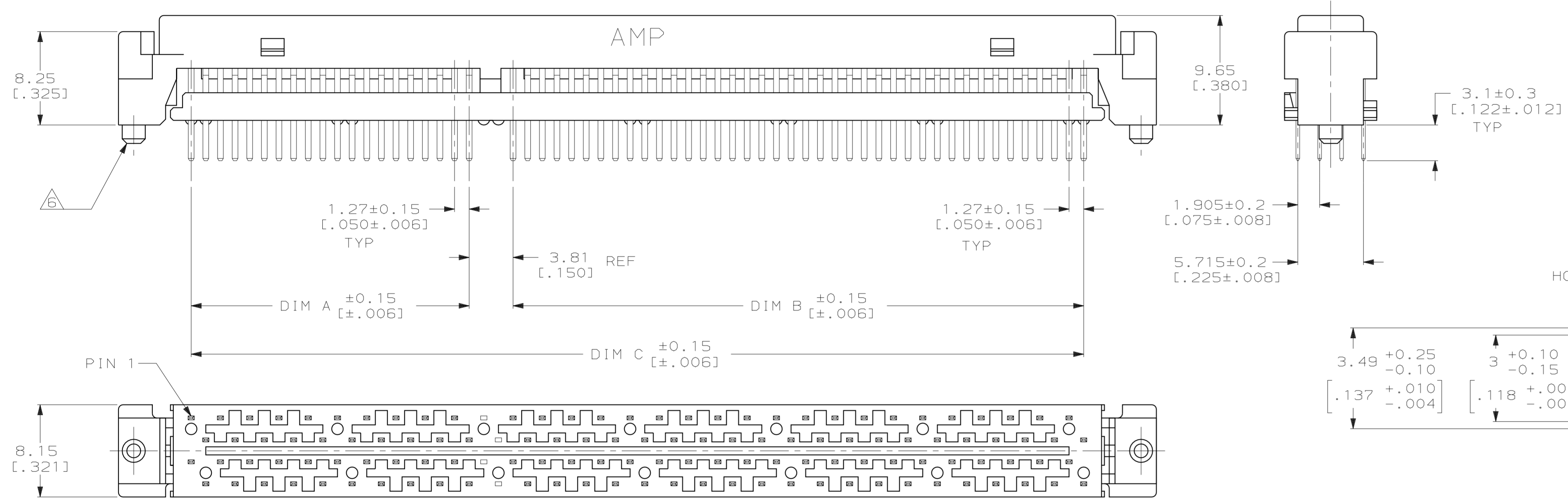


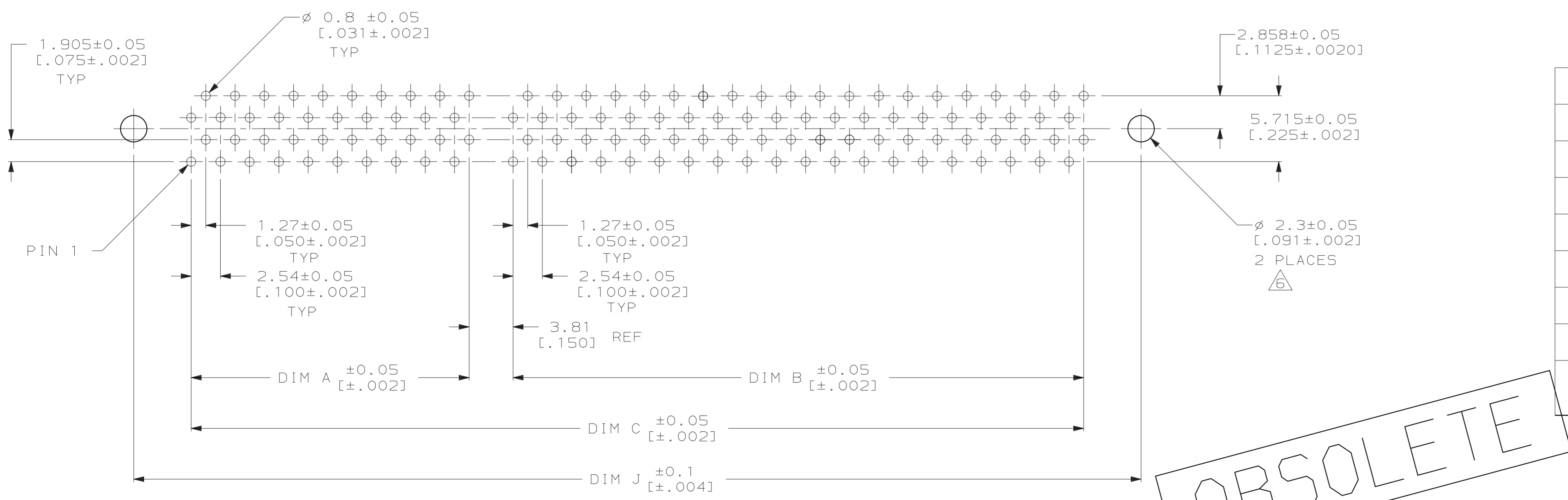
LOC	DIST	P	F	ZONE	LTR	DESCRIPTION	DATE	APPD
AR	84				B	REDRAWN; NPR C92-128	6/11/92	JHM
					C	OBSOLETE PER EC 0020-146-94	03/15/94	JM



- △ MATERIAL:
 HOUSING AND TINE PLATE - GLASS FILLED
 6/6 NYLON (ZYTEL FR50), 94V-0, BLACK.
 CONTACTS - PHOSPHOR BRONZE, 0.32 [.0125]
 THICK, PLATED WITH 0.3µm [.000011]
 MINIMUM THICK GOLD IN CONTACT AREA 1.0µm
 [.000039] MINIMUM THICK TIN-LEAD AND ON
 SOLDER TINE OVER 1.27µm [.000050]
 MINIMUM THICK NICKEL UNDERPLATE.
2. DIMENSIONS IN BRACKETS [] ARE IN INCHES.
- △ DIMENSIONS ARE MAXIMUM UNLESS OTHERWISE SPECIFIED.
4. CONNECTOR WILL ACCOMMODATE PRINTED
 CIRCUIT BOARD THICKNESS OF 0.8-1.6
 [.031-.063].
5. 120 POSITION AS SHOWN.
- △ BOSSES ON PN 176372-1, -2, -3, AND -4
 ONLY.



DIM J	DIM H	PART NO
-	128.34 [5.053]	176372-8
-	115.64 [4.553]	176372-7
-	102.94 [4.053]	176372-6
-	90.24 [3.553]	176372-5
72.2 [2.843]	75.00 [2.953]	176372-4
59.5 [2.343]	62.30 [2.453]	176372-3
46.8 [1.843]	49.60 [1.953]	176372-2
34.1 [1.343]	36.90 [1.453]	176372-1



DIM G	DIM F	DIM E	DIM D	DIM C	DIM B	DIM A	POSITION	PART NO
120.71 [4.753]	117.57 [4.629]	64.23 [2.529]	51.53 [2.029]	115.57 [4.550]	62.23 [2.450]	49.53 [1.950]	180	176372-8
108.01 [4.253]	104.87 [4.129]	64.23 [2.529]	38.83 [1.529]	102.87 [4.050]	62.23 [2.450]	36.83 [1.450]	160	176372-7
95.31 [3.753]	92.17 [3.629]	51.53 [2.029]	38.83 [1.529]	90.17 [3.550]	49.53 [1.950]	36.83 [1.450]	140	176372-6
82.61 [3.253]	79.47 [3.129]	51.53 [2.029]	26.13 [1.029]	77.47 [3.050]	49.53 [1.950]	24.13 [.950]	120	176372-5
67.37 [2.653]	64.23 [2.529]	-	-	62.23 [2.450]	-	-	100	176372-4
54.67 [2.153]	51.53 [2.029]	-	-	49.53 [1.950]	-	-	80	176372-3
41.97 [1.653]	38.83 [1.529]	-	-	36.83 [1.450]	-	-	60	176372-2
29.27 [1.153]	26.13 [1.029]	-	-	24.13 [.950]	-	-	40	176372-1

SUGGESTED PC BOARD
 MOUNTING DIMENSIONS
 COMPONENT SIDE

OBSOLETE

METRIC

THIS DRAWING IS A CONTROLLED DOCUMENT FOR
 AMP INCORPORATED. IT IS SUBJECT TO CHANGE
 AND THE CONTROLLING ENGINEERING ORGANIZATION
 SHOULD BE CONTACTED FOR THE LATEST REVISION.

DO NOT SCALE PRINT. UNLESS SPECIFIED DIMENSIONS IN mm [INCHES] TOLERANCES ON: 2 PLC DEC ± 3 PLC DEC ± ANGLES ±	DR 6/11/92 JOEL HAROLD WOOTEN CHK 2/3/93 D. HUSSEY APPD 2/3/93 G. BOWMAN APPD 2/3/93 T. PIZZULO
MATERIAL △	PRODUCT SPEC 108-5309
FINISH △	APPLICATION SPEC -
WEIGHT	-

AMP AMP Incorporated Harrisburg, PA 17105-3608		
NAME RECEPTACLE ASSEMBLY, VERTICAL, FH (FREE HEIGHT) CONNECTOR, CHAMP .050, SERIES I		
SIZE D	CAGE CODE 00779	DRAWING NO C=176372
SCALE 4:1	SHEET 1 OF 1	